

7 a , B

a , a , b a , a a b

<sup>a</sup> S B S U N C 501 20 S CB 92 G CO 80639-0017, USA

<sup>b</sup> U S G S M E S C F C CO 80525-3400, USA

19 b 2005: a a 6 a a 2006

a a b 20 a 2006

---

### Abstract

7 a (B), a a - a , b a a , a a

a 1950a, b, c, d, e, f, g, h, i, j, k, l, m, n, o, p, q, r, s, t, u, v, w, x, y, z, aa, ab, ac, ad, ae, af, ag, ah, ai, aj, ak, al, am, an, ao, ap, aq, ar, as, at, au, av, aw, ax, ay, az, ba, bb, bc, bd, be, bf, bg, bh, bi, bj, bk, bl, bm, bn, bo, bp, bq, br, bs, bt, bu, bv, bw, bx, by, bz, ca, cb, cc, cd, ce, cf, cg, ch, ci, cj, ck, cl, cm, cn, co, cp, cq, cr, cs, ct, cu, cv, cw, cx, cy, cz, da, db, dc, dd, de, df, dg, dh, di, dj, dk, dl, dm, dn, do, dp, dq, dr, ds, dt, du, dv, dw, dx, dy, dz, ea, eb, ec, ed, ee, ef, eg, eh, ei, ej, ek, el, em, en, eo, ep, eq, er, es, et, eu, ev, ew, ex, ey, ez, fa, fb, fc, fd, fe, ff, fg, fh, fi, fj, fk, fl, fm, fn, fo, fp, fq, fr, fs, ft, fu, fv, fw, fx, fy, fz, ga, gb, gc, gd, ge, gf, gg, gh, gi, gj, gk, gl, gm, gn, go, gp, gq, gr, gs, gt, gu, gv, gw, gx, gy, gz, ha, hb, hc, hd, he, hf, hg, hh, hi, hj, hk, hl, hm, hn, ho, hp, hq, hr, hs, ht, hu, hv, hw, hx, hy, hz, ia, ib, ic, id, ie, if, ig, ih, ii, ij, ik, il, im, in, io, ip, iq, ir, is, it, iu, iv, iw, ix, iy, iz, ja, jb, jc, jd, je, jf, jg, jh, ji, jj, jk, jl, jm, jn, jo, jp, jq, jr, js, jt, ju, jv, jw, jx, jy, jz, ka, kb, kc, kd, ke, kf, kg, kh, ki, kj, kk, kl, km, kn, ko, kp, kq, kr, ks, kt, ku, kv, kw, kx, ky, kz, la, lb, lc, ld, le, lf, lg, lh, li, lj, lk, ll, lm, ln, lo, lp, lq, lr, ls, lt, lu, lv, lw, lx, ly, lz, ma, mb, mc, md, me, mf, mg, mh, mi, mj, mk, ml, mm, mn, mo, mp, mq, mr, ms, mt, mu, mv, mw, mx, my, mz, na, nb, nc, nd, ne, nf, ng, nh, ni, nj, nk, nl, nm, nn, no, np, nq, nr, ns, nt, nu, nv, nw, nx, ny, nz, oa, ob, oc, od, oe, of, og, oh, oi, oj, ok, ol, om, on, oo, op, oq, or, os, ot, ou, ov, ow, ox, oy, oz, pa, pb, pc, pd, pe, pf, pg, ph, pi, pj, pk, pl, pm, pn, po, pp, pq, pr, ps, pt, pu, pv, pw, px, py, pz, qa, qb, qc, qd, qe, qf, qg, qh, qi, qj, qk, ql, qm, qn, qo, qp, qq, qr, qs, qt, qu, qv, qw, qx, qy, qz, ra, rb, rc, rd, re, rf, rg, rh, ri, rj, rk, rl, rm, rn, ro, rp, rq, rr, rs, rt, ru, rv, rw, rx, ry, rz, sa, sb, sc, sd, se, sf, sg, sh, si, sj, sk, sl, sm, sn, so, sp, sq, sr, ss, st, su, sv, sw, sx, sy, sz, ta, tb, tc, td, te, tf, tg, th, ti, tj, tk, tl, tm, tn, to, tp, tq, tr, ts, tt, tu, tv, tw, tx, ty, tz, ua, ub, uc, ud, ue, uf, ug, uh, ui, uj, uk, ul, um, un, uo, up, uq, ur, us, ut, uu, uv, uw, ux, uy, uz, va, vb, vc, vd, ve, vf, vg, vh, vi, vj, vk, vl, vm, vn, vo, vp, vq, vr, vs, vt, vu, vv, vw, vx, vy, vz, wa, wb, wc, wd, we, wf, wg, wh, wi, wj, wk, wl, wm, wn, wo, wp, wq, wr, ws, wt, wu, wv, ww, wx, wy, wz, xa, xb, xc, xd, xe, xf, xg, xh, xi, xj, xk, xl, xm, xn, xo, xp, xq, xr, xs, xt, xu, xv, xw, xx, xy, xz, ya, yb, yc, yd, ye, yf, yg, yh, yi, yj, yk, yl, ym, yn, yo, yp, yq, yr, ys, yt, yu, yv, yw, yx, yy, yz, za, zb, zc, zd, ze, zf, zg, zh, zi, zj, zk, zl, zm, zn, zo, zp, zq, zr, zs, zt, zu, zv, zw, zx, zy, zz.

a)  $a^2 + a^2 = 2a^2$  ( $> 1500$ ).  $\dots$   $a^2 = B$ .  
 $\dots$   $(a^2) a^2 = B$ .  $(A^2 a^2, \dots)$   
 $\dots$   $ba^2 = \dots$

2.3.  $P_1, P_2, P_3, P_4$

$\dots$   $A_1 A_2 a^2 \dots a^2 a^2 a^2 \dots$   $A_3 a^2 A_4 a^2$   
 $\dots$   $a^2 (1976) a^2 a^2 b^2 \dots a^2 A_5 a^2 b^2$   
 $\dots$   $a^2 a^2 b^2 a^2 a^2 a^2 \dots$   $A_6 A_7 A_8 a^2$   
 $a^2 a^2 \dots a^2 a^2 a^2 \dots$   $ba^2 a^2 \dots$   
 $A_9 A_{10} a^2$

2.4.  $E_1, E_2$

$\dots$   $a^2 A_1 a^2 a^2 \dots a^2 a^2 \dots a^2 A_2 a^2$   
 $A_3 a^2 a^2 a^2 a^2, 1991), a^2 A_4 a^2 a^2 \dots a^2 a^2$   
 $A_5^{342/} \dots a^2$   
 $4- a^2 \dots a^2 (A_1) a^2 \dots A_6 a^2 b^2 a^2$   
 $b^2 (a^2 a^2 = A_1), a^2 \dots (A_1 a^2 = A_1),$   
 $a^2 (-a^2 a^2 = A_1), \dots a^2 (-a^2 a^2 = A_1 a^2 =$   
 $A_1), a^2 a^2 a^2 (A_1 a^2 a^2 a^2 = A_1), A_7 a^2 a^2$   
 $(b^2 a^2 = A_1), A_8 a^2 a^2 a^2$   
 $(A_9 2(63 a^2 = 50 0-1( ) 995.4 276245 a^2) -421.5(977)-220.44b 67 a^2 251.54b a^2$

100 a a 5.0 a<sub>2</sub> (6.8).  
 A<sub>1</sub> (250 μ) A<sub>2</sub> a A<sub>3</sub> a  
 aa 2000 A<sub>1</sub> A<sub>2</sub> (10×  
 300) a a 0.3 / b  
 ( a ) a a a A<sub>1</sub> a a  
 L a

2.9. MALDI-TOF

A<sub>1</sub> a 0.5 μ A<sub>2</sub> B.  
 ( a a a - a ; a - a ) a  
 0.5 μ a A<sub>1</sub> a a a  
 b A<sub>1</sub> a a a a  
 a a a ( A<sub>1</sub> ) a a  
 a a A<sub>1</sub> a L a A<sub>2</sub>  
 a a a a a a a  
 5 15 a.

2.10. Tx

a A<sub>1</sub> A<sub>2</sub> a a a  
 A<sub>1</sub> (H) ba  
 a a (C) A<sub>1</sub> A<sub>2</sub> a A<sub>3</sub>  
 (G) ba a A<sub>1</sub> b a a  
 A<sub>1</sub> A<sub>2</sub> (M) b a a  
 A<sub>1</sub> a a a a  
 a a a a a a



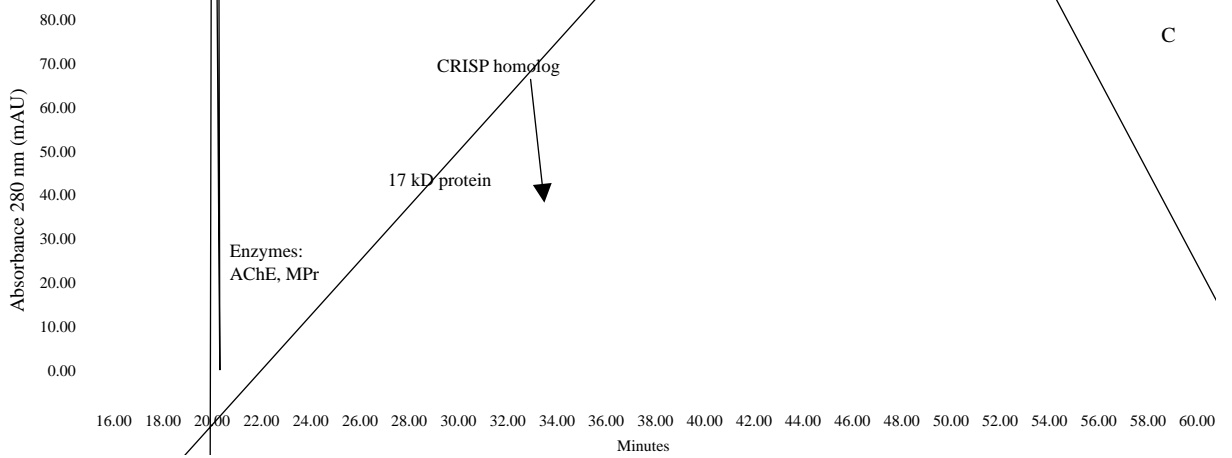
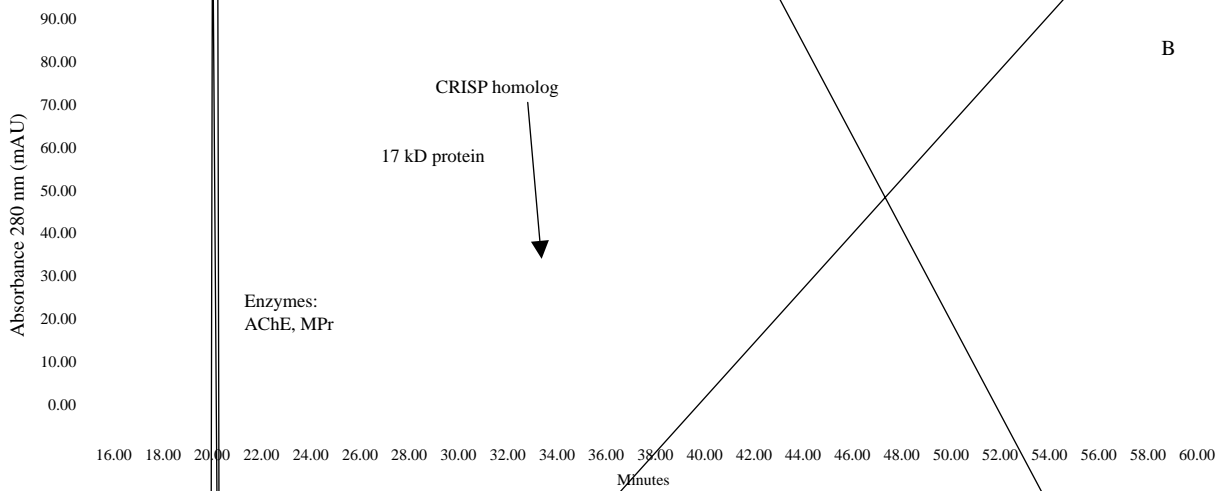
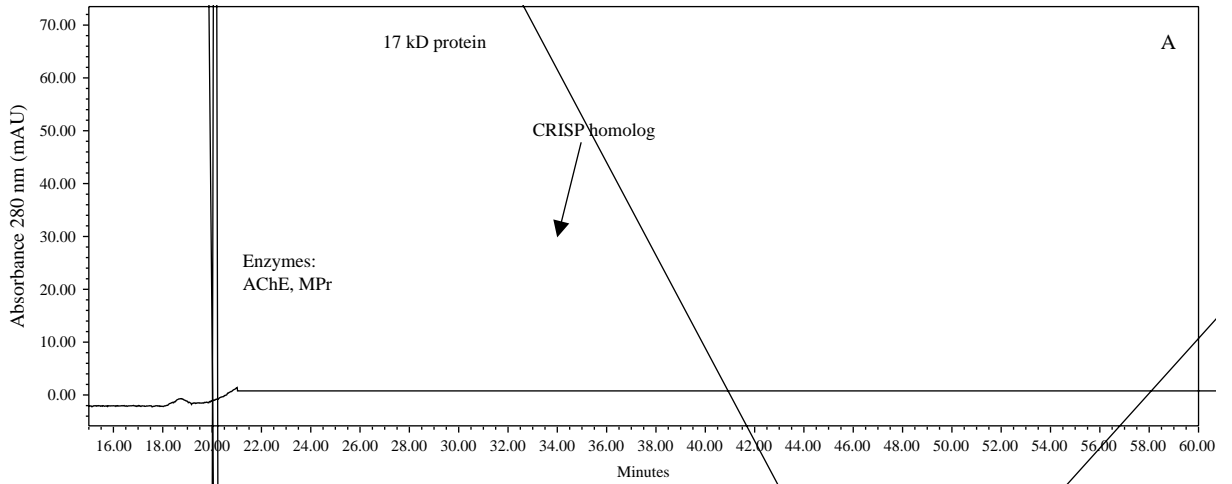


$\int \int_{\Delta} \int_a \dots \int_{\Delta} \int_b \dots$











... 2000.  $a \dots a$   
 ( )  $b \dots a$   
 $a \dots a$  38, 1663  
 1687.

... 1996  $a \dots a$   
 $a \dots a$  2. 34, 1149 1155.

... 2004.  $a \dots a$   
 $a \dots a$  2 ( )  $a \dots a$   
 $a \dots T$  (  $a \dots b$  )  
 44, 27 36.

... 2001.  $a \dots a$   $a \dots a$   
 55, 409 417.

... 1976  $a \dots a$   
 $L \dots a \dots a$  (  $B$  )  
 14, 307 312.

... 2004.  
 $L \dots a \dots a$   $b \dots a$   $a \dots a$   
 $a \dots a$  43, 819 827.

... 2004b.  $a \dots a$   $a \dots a$   $a \dots a$   
 $B$  (  $a \dots a$  )  $a \dots a$   
 $a \dots a$  24, 107 113.

... 2005.  $a \dots a$   $a \dots a$   $a \dots a$   
 $B$  (  $a \dots a$  ) 45,  
 329 334.

... 1988.  $a \dots a$   $a \dots a$   
 $C$   $a \dots a$  1988, 92 101.

... 1993.  $a \dots a$   $b \dots a$   $a \dots a$   
 $C$  2, 223 239.

... 1998.  $a \dots a$   $b \dots a$   $a \dots a$   
 $b \dots a$  :  $a \dots (a)$ ,  $a \dots a$   
 $a \dots a$  361 404.

... 2002.  $a \dots a$   $a \dots a$   $b \dots a$   
 $a \dots a$  21, 43 83.

... 2003.  $a \dots a$   $a \dots a$   $C$   $a \dots a$   
 $a \dots a$   $a \dots a$  2003, 769  
 782.

... 2001.  $a \dots a$   $a \dots a$   $a \dots a$   
 39, 87 96.

... 2002.  $a \dots (a)$ ,  $a \dots a$   $a \dots a$   
 $a \dots a$  516.

... 1998.  $a \dots a$   $a \dots a$   $a \dots a$   
 $a \dots a$   $a \dots a$   $a \dots a$  119,  
 119 127.

... 1979.  $a \dots a$   $a \dots a$   
 $a \dots a$   $a \dots a$   $a \dots a$   $a \dots a$   
 $a \dots a$  96, 151 158.

... 1938  $a \dots a$   $a \dots a$   
 $a \dots a$  27, 493 497.

... 1993.  $a \dots a$   $a \dots a$   $a \dots a$   
 $a \dots b$   $a \dots B$   
 (  $a \dots a$  :  $b \dots a$  )  $a \dots a$  49, 297 300.