



Evaluation of cytotoxic activities of snake venoms toward breast (MCF-7) and skin cancer (A-375) cell lines

Michael J. Bradshaw Anthony J. Saviola
Elizabeth Fesler Stephen P. Mackessy

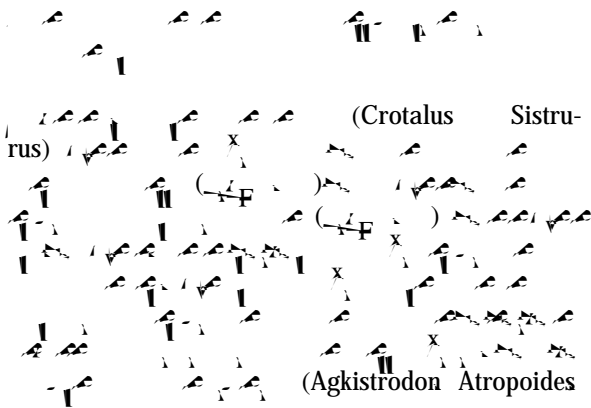
Abstract

(Pseudechis porphyriacus)

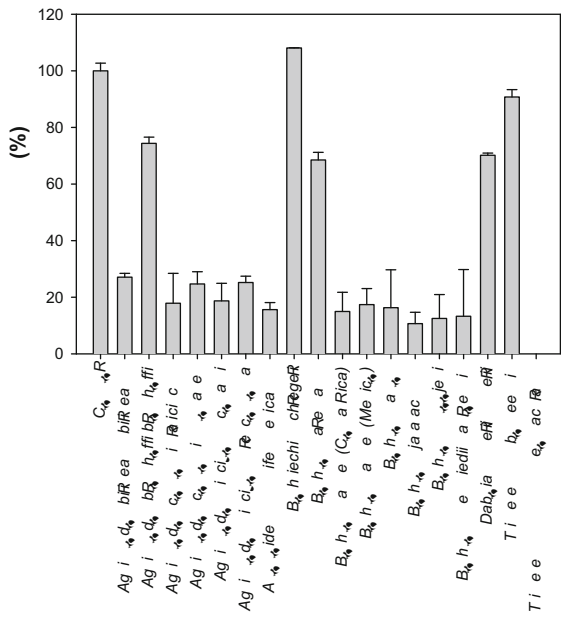
1 2 3 4 5 6 7 8 9 10 11 12 13 14 15 16 17 18 19 20 21 22 23 24 25 26 27 28 29 30 31 32 33 34 35 36 37 38 39 40 41 42 43 44 45 46 47 48 49 50 51 52 53 54 55 56 57 58 59 60 61 62 63 64 65 66 67 68 69 70 71 72 73 74 75 76 77 78 79 80 81 82 83 84 85 86 87 88 89 90 91 92 93 94 95 96 97 98 99 100



Results



C_h aR
C_h aR ada a e
C_h aR ba R c
C_h aR d i e ific
C_h aR e
C_h aR h_h id a lca da
C_h aR h_h id h_h id
C_h aR i e edi h_h i
C_h aR h_h id h_h be i
C_h aR h_h id h_h id
C_h aR i che h
C_h aR h_h R
C_h aR h_h ega ce be
C_h aR h_h ega C_h h_h
C_h aR h_h ega h_h i
C_h aR h_h ega h_h ega



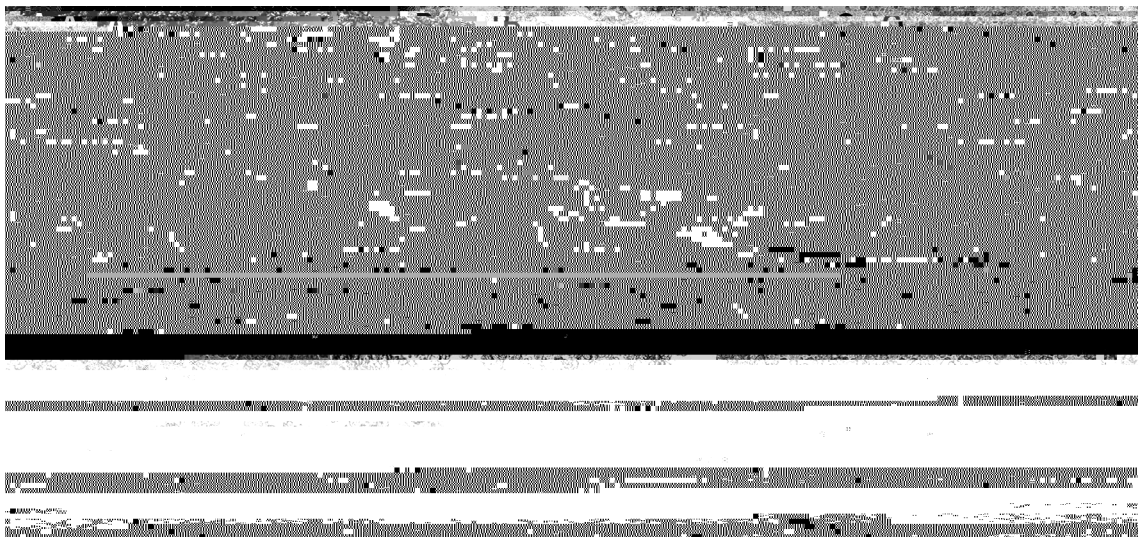


Fig. 4

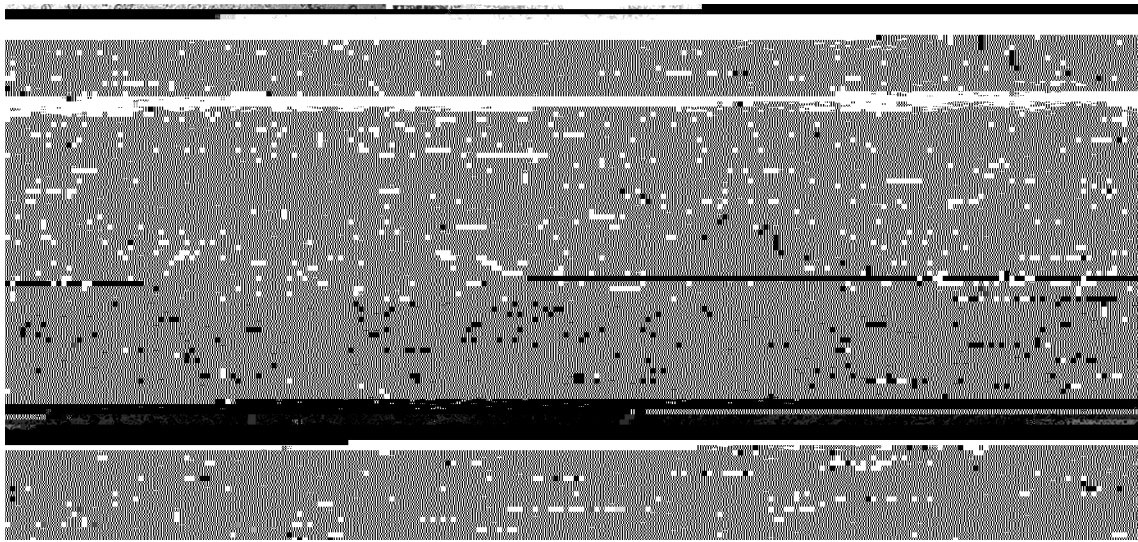
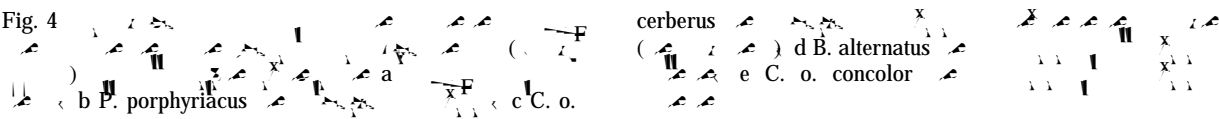
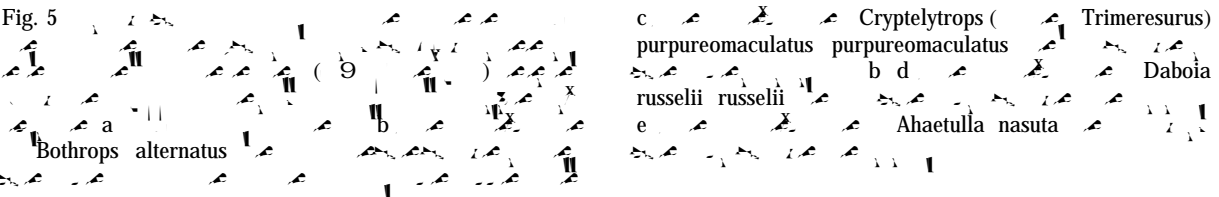
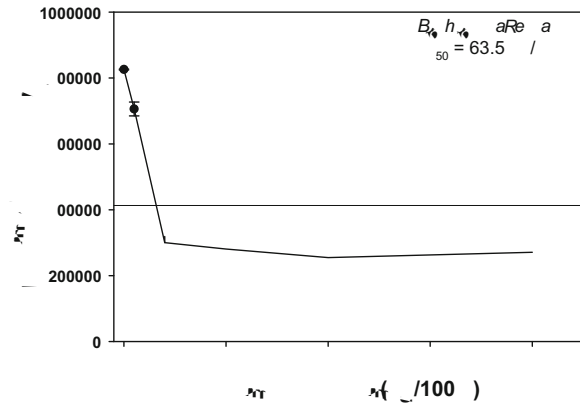
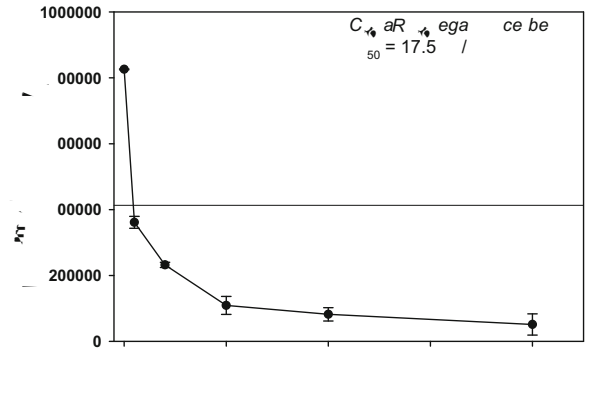
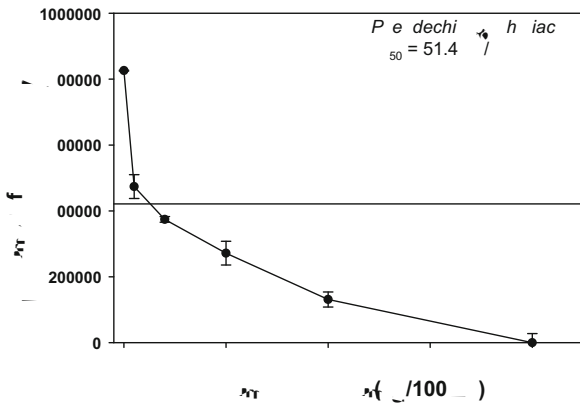


Fig. 5





Discussion



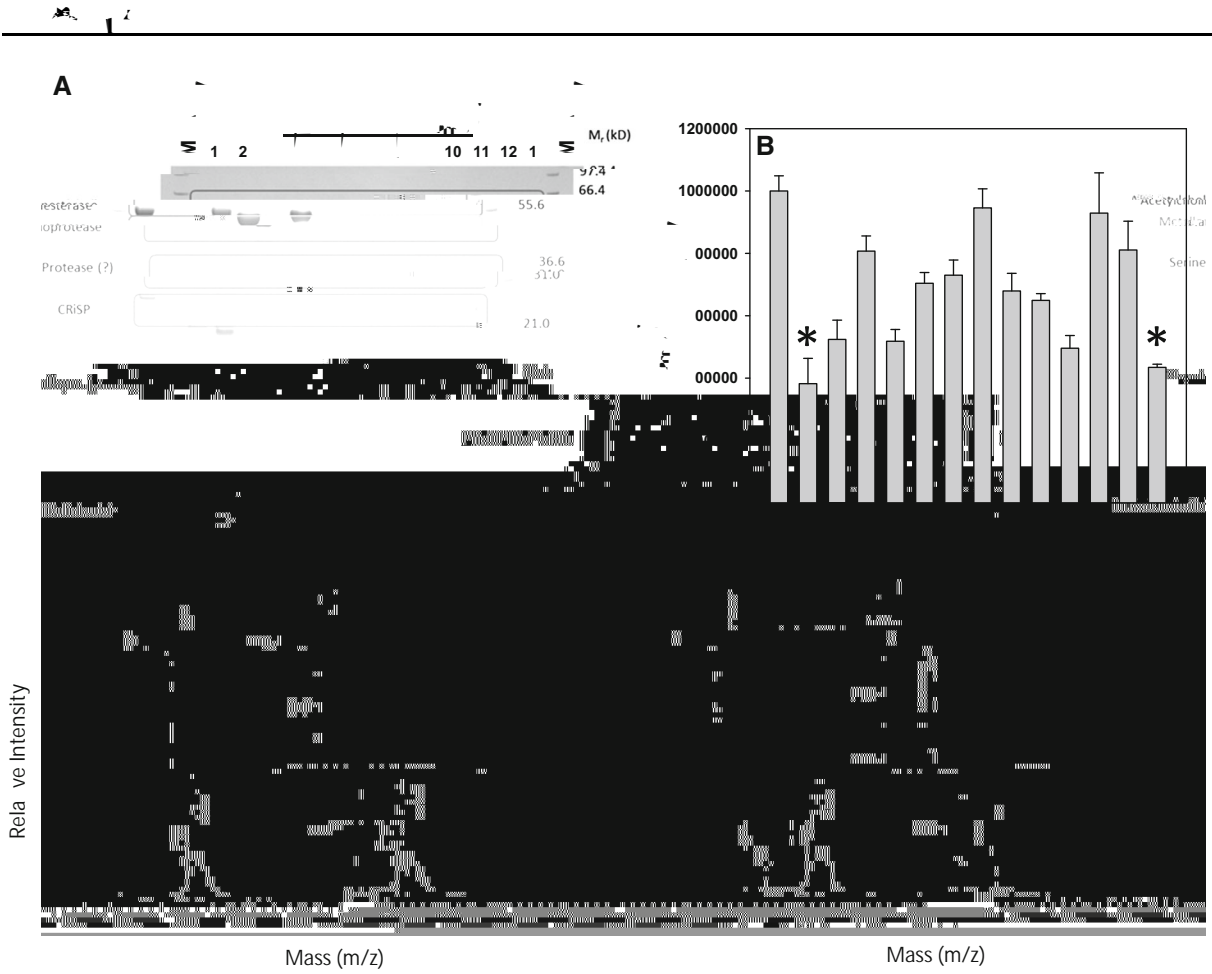
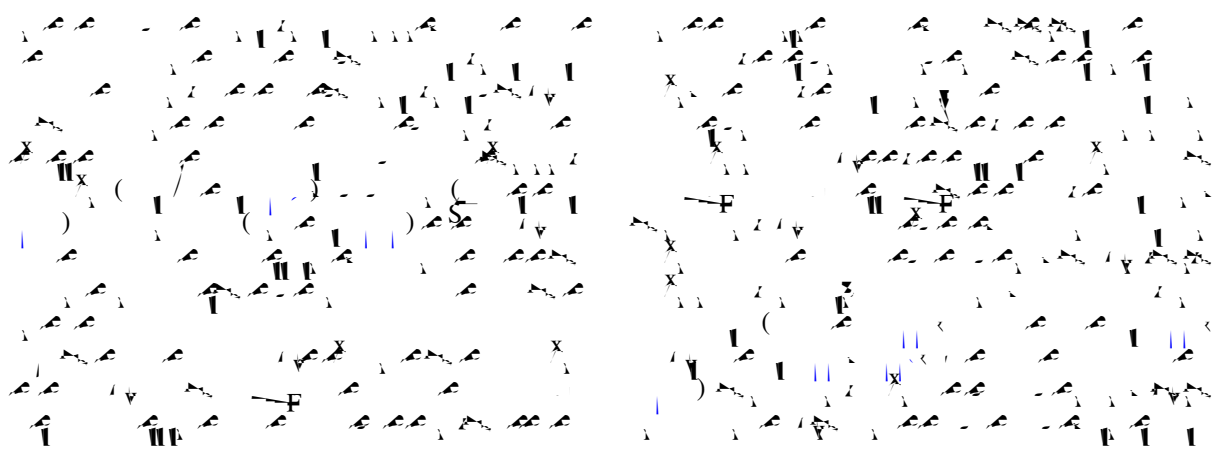


Fig. 8
Numbers
a
S
left
b
P. porphyriacus
P. porphyriacus

(asterisks)
c
d



1. $x^2 + 2x + 1 = (x+1)^2$
2. $x^2 - 4 = (x-2)(x+2)$
3. $x^2 + 5x + 6 = (x+2)(x+3)$
4. $x^2 - 7x + 12 = (x-3)(x-4)$
5. $x^2 + 8x + 15 = (x+3)(x+5)$
6. $x^2 - 9 = (x-3)(x+3)$
7. $x^2 + 10x + 25 = (x+5)^2$
8. $x^2 - 16 = (x-4)(x+4)$
9. $x^2 + 12x + 36 = (x+6)^2$
10. $x^2 - 25 = (x-5)(x+5)$



Acknowledgments

